

KLM155 DC LOW POWER BUS PATIENT LIGHT FLAT

KUERZI
avionics

Datasheet

Kuerzi Avionics AG
Flugplatz
CH-9506 Lommis

info@kuerzi.com
www.kuerzi.com

Tel. +41 52 376 22 27



Description

The KLM155 DC LOW POWER BUS PATIENT LIGHT FLAT is an LED light source offering excellent illumination everywhere in the cabin. The light is dimmable and produces 300 lux at maximum power, measured in one meter distance. To illuminate large cabins optimally several lights can be stacked together. The KLM155 operates up to an ambient temperature of 70°C and has an integrated active temperature limitation circuit, which prevents the unit of exceeding 80°C internally.

The product meets aviation standards and requirements and is delivered with an EASA Form 1. The applicable approval can be provided by us specifically for your aircraft type.

Features

- LED lights
- 300 lux
- 3800-4500 Kelvin light temperature
- Dimmable
- 28VDC power input
- Temperature limitation to max 80°C
- Stackable for variable lengths and formations

Application example

The KLM155 is operational in cabins of civil operated helicopters. It can be installed as single light source or as a part of our EMS Modular Mission System (MMS). This includes different lighting solutions with their respective control units. The EMS MMS with its modular design fits into every type of cabin of any size to meet your needs. There are also an NVIS solution available for night vision operation.

On your request the KLM155 can be altered or adapted to your requirements.

Similar products that also might interest you:

KLM154 DC Low Power Bus Door Light 1/2 Open
KLM158 DC Low Power Bus Patient Light Flat NVIS
KLM159 DC Low Power Bus Door Light Round
KLM160 DC Low Power Bus Patient Light Round 1/3
KLM161 DC Low Power Bus Patient Light Round 2/3 NVIS
KLM136 Dimming Box

Technical Specifications

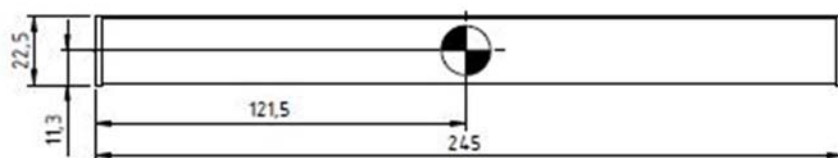
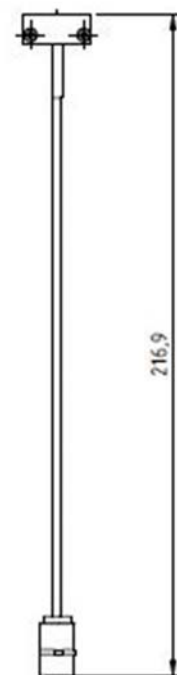
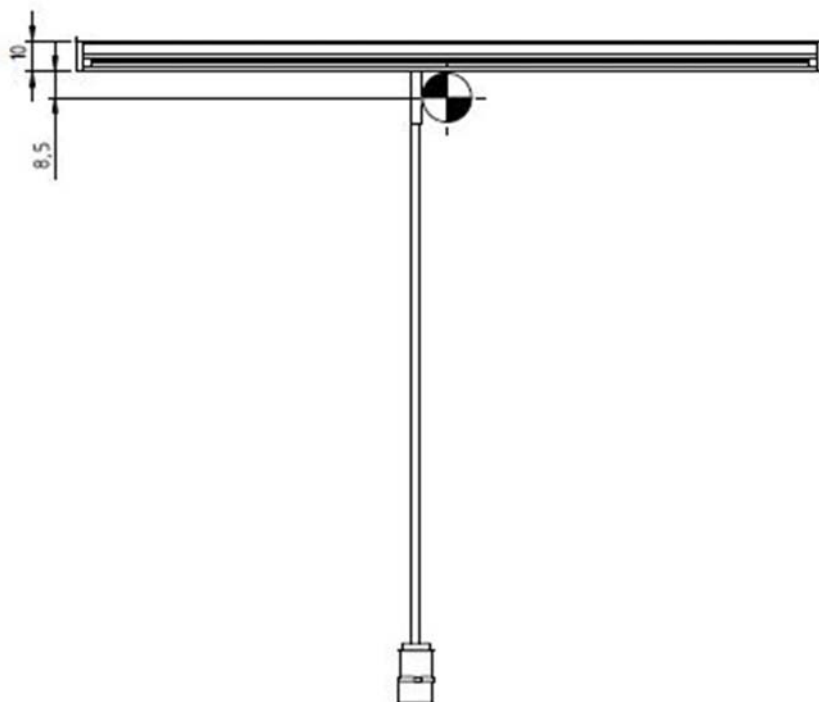
Nominal Operating Input Voltage	28.00 V
Max Operating Voltage	32.2VDC
Nominal Operating Input Current	350 mA
Max Input Current	3.00 A
Max Operating Temperature	+70°C
Pressure Limitation	Designed to 25'000ft

Environmental Specifications according DO-160 / ED-14

Emission of Radio Frequency Energy	DO-160G Section 21 Cat. M
Fire, Flammability	DO-160G Section 26 Cat. C

Mechanical Dimensions

Weight of the unit	75.00 Gr
Weight of the unit including required installation materials (w/o wiring)	80.00 Gr
All dimensions [mm]	



Configuration / Ordering Data

Part Number	Type	Description
1212911.16	KLM155	DC low power bus patient light with flat cover

Additional Parts for installation:

Qty	Part Number	Description
1	SJS830100	INLINE PLUG, SOCKET, 8POL, W/O CONTACTS
8	M39029/57-354	CONTACT, SOCKET, AWG22-28
2	504-401-000	FASTENER CLAMP
1	1212911.12.20	KPL113 DC LOW POWER BUS JUNCTION 3 PORT
1	1212911.12.30	KPL113 DC LOW POWER BUS JUNCTION 6 PORT